



Beaufort County Public Works Stormwater Infrastructure Project Summary

Project Summary: Hewlett Road

Activity: Routine/Preventive Maintenance

Narrative Description of Project:

Completion: Jul-14

Project improved 5,794 L.F. of drainage system. Bush hogged 1,583 L.F. of workshelf. Cleaned out (3) catch basins, 3,891 L.F. of roadside ditch and 830 L.F. of channel. Jetted (1) access pipe, (9) crossline pipes and (35) driveway pipes. Hydroseeded for erosion control.

2014-635 / Hewlett Road	Labor Hours	Labor Cost	Equipment Cost	Material Cost	Contractor Cost	Indirect Labor	Total Cost
AUDIT / Audit Project	1.0	\$20.46	\$0.00	\$0.00	\$0.00	\$13.23	\$33.69
CBCO / Catch basin - clean out	12.0	\$268.08	\$132.96	\$73.86	\$0.00	\$179.46	\$654.36
CLPJT / Crossline Pipe - Jetted	26.0	\$580.79	\$288.08	\$140.79	\$0.00	\$388.83	\$1,398.49
DPJT / Driveway Pipe - Jetted	56.0	\$1,255.08	\$664.80	\$253.22	\$0.00	\$831.24	\$3,004.34
HAUL / Hauling	159.0	\$3,403.97	\$1,630.50	\$863.28	\$0.00	\$2,154.91	\$8,052.66
HYDR / Hydroseeding	12.0	\$259.59	\$23.30	\$78.16	\$0.00	\$168.48	\$529.53
ODBH / Outfall ditch - bushhogged	27.0	\$585.25	\$55.75	\$28.54	\$0.00	\$380.91	\$1,050.45
ODCO / Outfall ditch - cleaned out	63.0	\$1,373.40	\$278.03	\$90.21	\$0.00	\$892.83	\$2,634.47
ONJV / Onsite Job Visit	56.0	\$1,871.18	\$202.72	\$208.00	\$0.00	\$1,327.42	\$3,609.32
PI / Project Inspection	1.0	\$44.27	\$3.62	\$3.20	\$0.00	\$33.96	\$85.05
PP / Project Preparation	2.0	\$88.54	\$7.24	\$6.40	\$0.00	\$67.92	\$170.10
RSDCL / Roadside Ditch - Cleanout	427.0	\$9,159.44	\$1,680.49	\$501.18	\$0.00	\$5,964.66	\$17,305.77
TC / Traffic Control - Jobsite	20.0	\$385.60	\$72.40	\$28.80	\$0.00	\$244.20	\$731.00
UC / Utility Coordination	1.0	\$20.46	\$0.00	\$0.00	\$0.00	\$13.23	\$33.69
UTLOC / Utility locates	2.0	\$88.54	\$7.24	\$9.60	\$0.00	\$67.92	\$173.30
WSBH / Workshelf - Bush Hogged	20.0	\$469.15	\$80.20	\$50.69	\$0.00	\$318.45	\$918.48
2014-635 / Hewlett Road Sub Total	885.0	\$19,873.80	\$5,127.33	\$2,335.92	\$0.00	\$13,047.65	\$40,384.69
Grand Total	885.0	\$19,873.80	\$5,127.33	\$2,335.92	\$0.00	\$13,047.65	\$40,384.69

Before



During



After



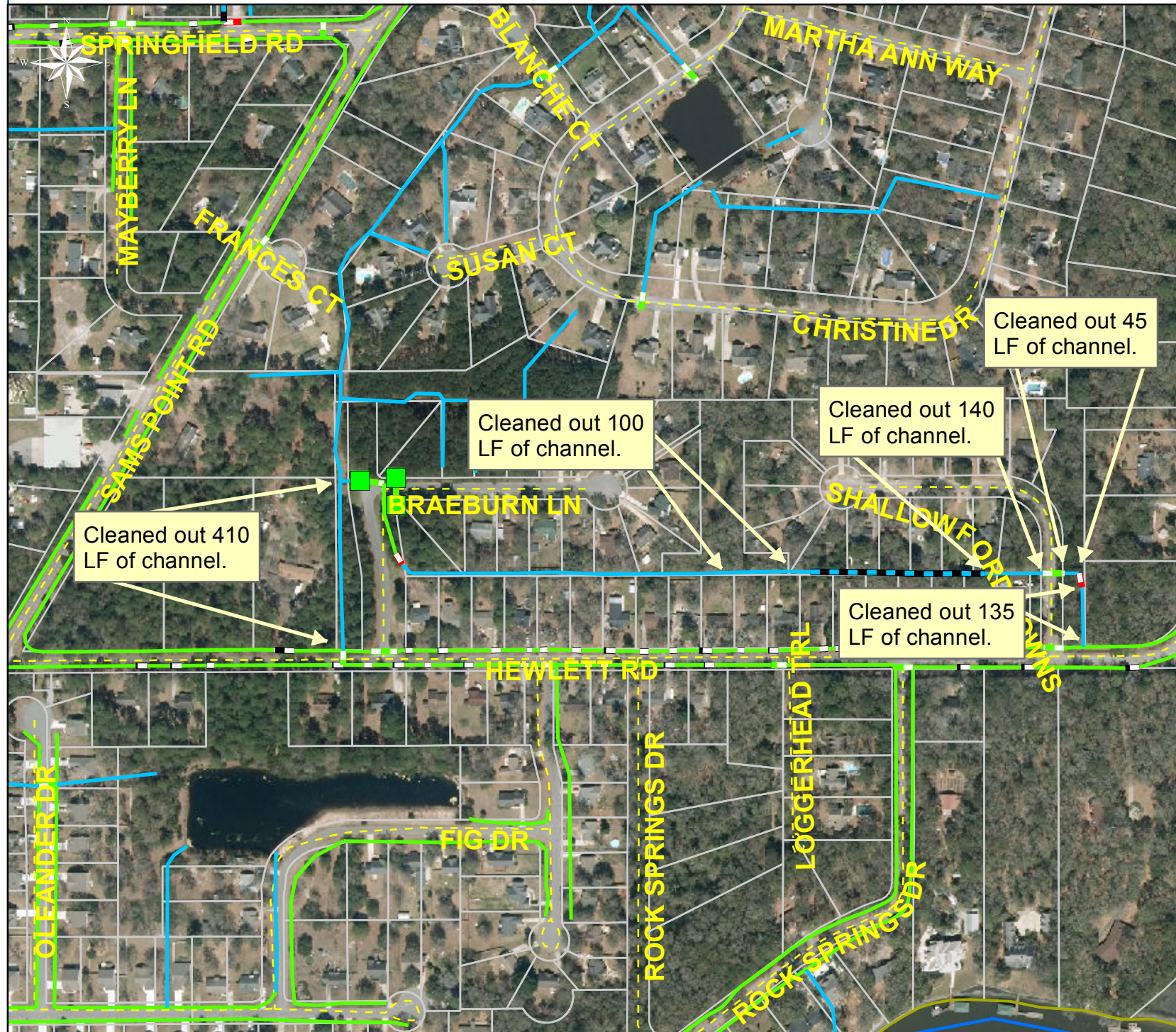
Project: Hewlett Road Map 1

Activity: Routine/ Preventive Maintenance

Project #: 2014-635

Township: Lady's Island

Completed: July 2014



Legend

TYPE

- River
- Creek/Stream
- River/Creek/Marsh BANK
- Channel (fka Outfall)
- Channel Pipe
- Lateral
- Lateral Pipe
- Roadside
- Roadside Pipe
- Road Pipe
- Crossline Pipe
- Driveway Pipe
- Access Pipe
- Bleeder Pipe
- Catch Basin



1 inch = 311 feet

Prepared By: BC Stormwater Management Utility

Date Print: 8/6/14

File:C:/sethdata/projects/projectmaps/Hewlett Rd 2014-635 Map1

Project: Hewlett Road Map 2

Activity: Routine/ Preventive Maintenance

Project #: 2014-635

Township: Lady's Island

Completed: July 2014



Cleaned out 248 LF of roadside ditch and hydroseeded for erosion control.

Cleaned out 1,175 LF of roadside ditch.

Cleaned out 418 LF of roadside ditch.

Cleaned out 1,550 LF of roadside ditch.

Cleaned out 140 LF of roadside ditch.

Cleaned out 162 LF of roadside ditch and hydroseeded for erosion control.

Legend

TYPE

- River
- Creek/Stream
- River/Creek/Marsh BANK
- Channel (fka Outfall)
- Channel Pipe
- Lateral
- Lateral Pipe
- Roadside
- Roadside Pipe
- Road Pipe
- Crossline Pipe
- Driveway Pipe
- Access Pipe
- Bleeder Pipe
- Catch Basin



1 inch = 311 feet

Project: Hewlett Road Map 3

Activity: Bush Hog

Project #: 2014-635

Township: Lady's Island

Completed: July 2014



Legend

TYPE

- River
- Creek/Stream
- River/Creek/Marsh BANK
- Channel (fka Outfall)
- Channel Pipe
- Lateral
- Lateral Pipe
- Roadside
- Roadside Pipe
- Road Pipe
- Crossline Pipe
- Driveway Pipe
- Access Pipe
- Bleeder Pipe
- Catch Basin



1 inch = 311 feet

Prepared By: BC Stormwater Management Utility

Date Print: 8/6/14

File: C:/sethdata/projects/projectmaps/BH/Hewlett Rd 2014-635 Map3

Project: Hewlett Road Map 4

Activity: Vacuum Truck
















Project #: 2014-635

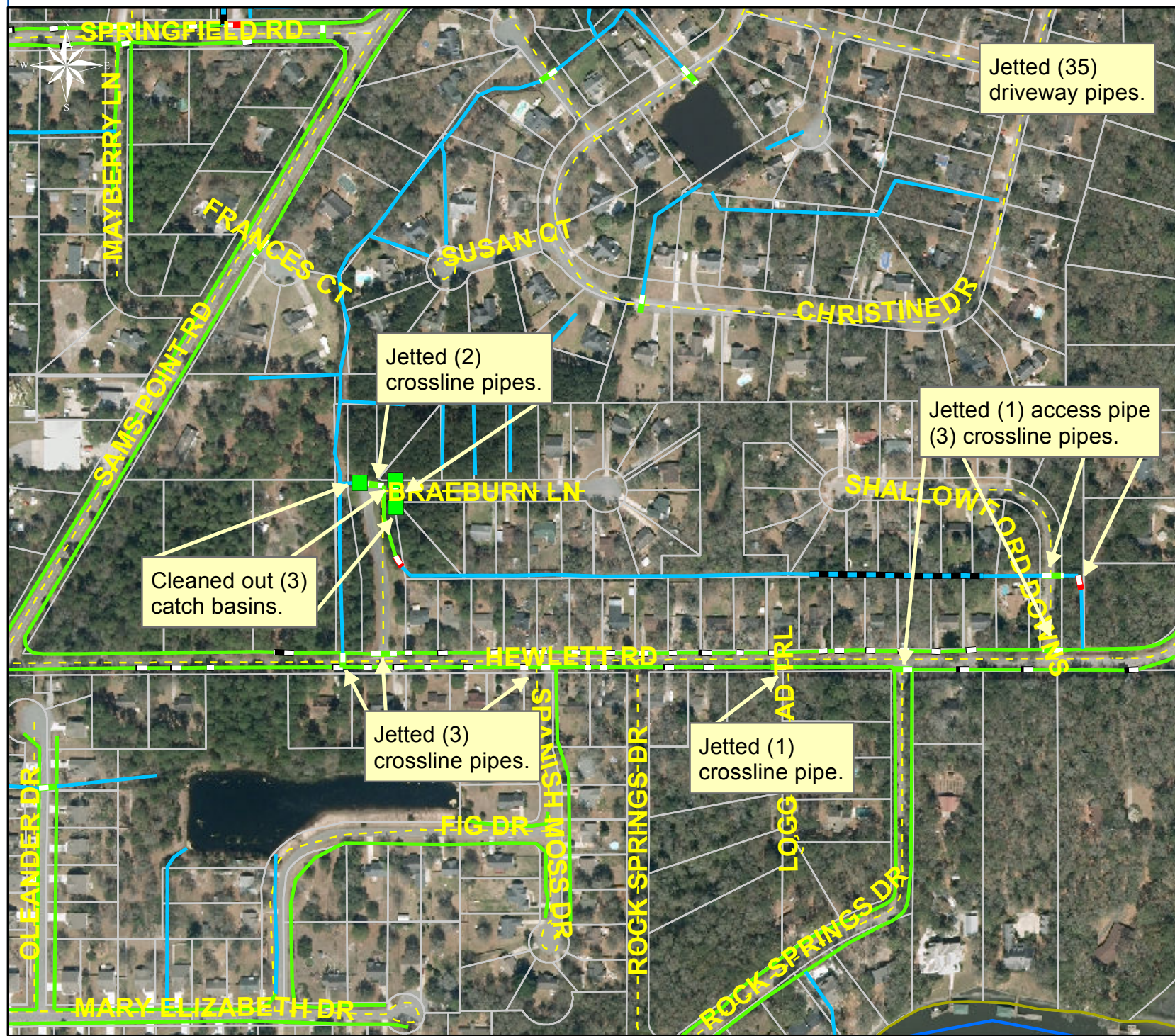
Township: Lady's Island

Completed: July 2014

Legend

TYPE

-  River
-  Creek/Stream
-  River/Creek/Marsh BANK
-  Channel (fka Outfall)
-  Channel Pipe
-  Lateral
-  Lateral Pipe
-  Roadside
-  Roadside Pipe
-  Road Pipe
-  Crossline Pipe
-  Driveway Pipe
-  Access Pipe
-  Bleeder Pipe
-  Catch Basin



1 inch = 311 feet